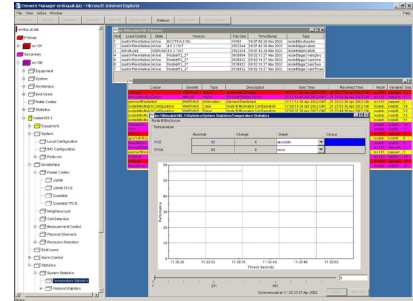




IPWireless Element Management System

The IPWireless Element Management System (EMS) provides configuration management, performance monitoring and alarm/ event reporting for the IPWireless TD-CDMA network elements.



The IPWireless Element Management System (EMS) provides configuration management, performance monitoring and alarm/event reporting for the IPWireless TD-CDMA network elements. IPWireless EMS software runs on industry standards servers and communicates with INC and Node B via SNMPv3. EMS clients connect to the EMS server via standard web browser making remote management of the network possible.

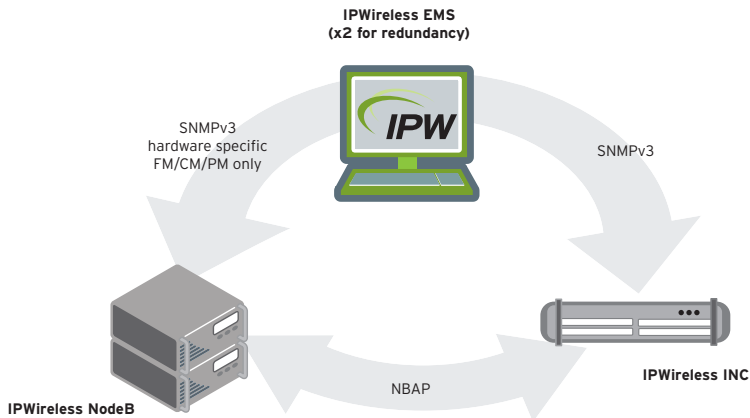
FEATURES AND BENEFITS

Redundancy: High availability is supported by deploying multiple EMS servers. Each network element is controlled by a primary and a secondary sever. Configuration and management of network elements automatically switches over to the backup server should one of the EMS server become unavailable.

Platform: The IPWireless EMS runs on a Sun™ server. The operator can choose Sun server platforms to match with the network size and data logging requirements.

Remote Management: Distributed management stations use Java™ enabled web browsers on standard Windows® PCs. Operator can perform network configuration, performance viewing/ logging, software upgrade via the EMS client.

Standard OA&M architecture: IPWireless network elements follows the UMTS standards for OA&M, namely that standardized OA&M of the Node B is done via the RNC component of the INC over NBAP with the INC acting as a proxy manager. Management of the INC and the hardware aspect of the Node B is done via SNMPv3.



ORDERING INFORMATION

To place an order, please contact IPWireless regional sales.
 Americas – americassales@ipwireless.com
 EMEA – emeasales@ipwireless.com
 Asia Pacific – apacsales@ipwireless.com

ABOUT IPWIRELESS

IPWireless is a pioneer in developing and designing 3G and 4G wireless broadband and broadcast solutions, including chipsets, devices and complete network infrastructure solutions, based on 3GPP, the world's preeminent mobile standard. The company's high performance mobile broadband and integrated mobile broadcast (IMB) solutions enable mobile operators, consumer electronics companies, as well as government, public safety and military agencies to deliver a new generation of wireless services and develop compelling new applications using untapped global spectrum bands. The company's mobile broadband and IMB solutions have been deployed by some of the world's largest mobile operators, and government agencies including T-Mobile, Orange, New York City's Department of Information Technology and Telecommunications (DoITT) and more. In Q2 2010, IPWireless and Sony announced an initiative to jointly develop 4G and Beyond Wireless Technologies.

IPWireless is headquartered in San Francisco, California, and operates a technology development center in Chippenham, UK. For more information, visit the company's Web site at www.ipwireless.com.



Corporate Headquarters

90 New Montgomery Street, Suite 315
 San Francisco, CA 94105 USA
 +1 415 430 1350 Fax +1 415 957 5821

U.K. R&D Centre

Unit 7, Greenways Business Park
 Chippenham, Wiltshire SN15 1BN United Kingdom
 +44 (0) 1249 800 100